

TM 9-3413-223-15P

DEPARTMENT OF THE ARMY TECHNICAL MANUAL

OPERATOR'S

ORGANIZATIONAL, DIRECT SUPPORT, GENERAL
SUPPORT AND DEPOT MAINTENANCE REPAIR

PARTS AND SPECIAL TOOLS LIST

FOR

DRILLING MACHINE, UPRIGHT BENCH MOUNTED,
1/4 IN. CAPACITY, 2-1/4 SPINDLE TRAVEL,
1/4 HP, 115 V, 60 C, SGLE-PH (HIGH SPEED HAMMER CO,
MODEL R-53) (3413-221-8714)

This copy is a reprint which includes current
pages from Change 1.

HEADQUARTERS, DEPARTMENT OF THE ARMY

OCTOBER 1969

CHANGE
No. 1



HEADQUARTERS
DEPARTMENT OF THE ARMY
WASHINGTON, D.C., 10 May 1973

Operator's
Organizational, Direct Support, General
Support and Depot Maintenance Repair
Parts and Special Tools List
for
DRILLING MACHINE, UPRIGHT BENCH MOUNTED,
1/4 IN. CAPACITY, 2-1/4 SPINDLE TRAVEL,
1/4 HP, 115 V, 60 C, SGLE-PH (HIGH SPEED
HAMMER CO, MODEL R-53)
(3413-221-8714)

This change is current as of 7 March 1973.

TM 9-3413-223-15P, 7 October 1969 is changed as follows:

Page 1. Paragraph 2a and 2b are superseded as follows

- a. Basic Issue Items List. Not applicable.
 - b. Items Troop Installed or Authorized List. Not applicable.
- Delete subparagraphs 2c and 2e.

Page 3, paragraph 4 is superseded as follows:

4. Components of the End Item
Parts included with the end item and considered as components of the end item configuration are listed in table 1.

Table 1. Components of the End Item.

Components	Part No.	(FSCM)
CHUCK DRILL	105	28626
KEY, DRILL CHUCK:	No. 3, S 1	31549

Page 4, Paragraph 8 is superseded as follows:

8. Reporting of Equipment Publication Improvements

The reporting of errors, omissions, and recommendations for improving this publication by the individual user is encouraged. Reports should be submitted on DA Form 2028 (Recommended Changes to Publications) and forwarded direct to: Commander US Army Weapons Command, ATTN: AMSWE-MAS-SP, Rock Island, IL 61201.

Section II is rescinded.

Page 5. Section III is rescinded.

Page 6. Section V is rescinded.

By Order of the Secretary of the Army:

CREIGHTON W. ABRAMS
General, United States Army
Chief of Staff

Official:

VERNE L. BOWERS
Major General, United States Army
The Adjutant General

Distribution:

Active Army:

DCSLOG (3)	Regt/Gp/bat gp (2)
CNGB (1)	Bn (1)
TSG (1)	WSMR (2)
COE (5)	USATC (2)
Dir of Trans (1)	USAOC&S (10)
ACSC-E (1)	USASCS (5)
USARADBD (2)	USATSCH (5)
CONARC (2)	Gen Dep (2)
AMC (5)	AD (5)
WECOM (10)	APG (1)
MECOM (2)	Arsenals (5)
TACOM (2)	MAAG (2)
ARADCOM (2)	USABRL (1)
ARADCOM Rgn (2)	AFIP (1)
OS Maj Comd (2)	NLABS (2)
LOGCOMD (2)	Camp Stanley Stor Actv (1)
USACDCEC (10)	Engr FLDMS (1)
Armies (3) except	Sig FLDMS (1)
Seventh USA (5)	Ft Knox FLDMS (10)
Eighth USA (5)	Units org under fol TOE:
Corps (2)	9-17 (2)
Div (3)	9-47 (2)
Bde (1)	

ARNG: State AG (3); Units—Same as Active Army, except allowance is one (1) copy each.

USAR: None.

For explanation of abbreviations used, see AR 310-50.

TECHNICAL MANUAL }
No. 9-3413-223-15P }

HEADQUARTERS
DEPARTMENT OF THE ARMY
WASHINGTON 25, D.C. 7 October 1969

OPERATOR'S
ORGANIZATIONAL, DIRECT SUPPORT, GENERAL
SUPPORT AND DEPOT MAINTENANCE REPAIR
PARTS AND SPECIAL TOOL LISTS
FOR
DRILLING MACHINE, UPRIGHT, BENCH MOUNTED,
1/4 IN. CAPACITY, 2-1/4 IN. SPINDLE TRAVEL,
1/4 IN. HP, 115 V, 60 C, SGLE-PH (HIGH SPEED HAMMER CO,
MODEL R-53) (3413-221-8714)

This manual is current to 24 September 1969

Section	Page
I. INTRODUCTION	1
II. BASIC ISSUE ITEMS LIST	4
III. PRESCRIBED LOAD ALLOWANCE	5
IV. ORGANIZATIONAL REPAIR PARTS	6
V. TOOLS AND SUPPORT EQUIPMENT	6
VI. DIRECT SUPPORT, GENERAL SUPPORT AND DEPOT REPAIR PARTS	7
Repair Parts For:	
DRILLING MACHINE GROUP	7
MOTOR GROUP	10
VII. FEDERAL STOCK NUMBER AND REFERENCE NUMBER INDEX	12
VIII. ILLUSTRATIONS	
1. DRILLING MACHINE GROUP	13
2. MOTOR GROUP	14

* This manual supersedes SM ORD 7-8 SNL J-292, 17 January 1952, including changes.

Section I. INTRODUCTION

1. Scope

This manual lists basic issue items and repair parts required for the performance of operator, organizational, direct support, general support, and depot maintenance of the drilling machine.

2. General

This Basic Issue Items, Repair Parts and Special Tools list is divided into the following sections:

a. Basic Issue Items—Section II. A list of items which accompany the drilling machine and are required by the operator/crew for installation, operation, or maintenance.

b. Maintenance and Operating Supplies. Not applicable

c. Prescribed Load Allowance (PLA)—Section III. A composite listing of repair parts and support equipment having quantitative allowances for initial stockage at the organizational level.

d. Repair Parts—Section IV. A list of repair parts authorized for the performance of maintenance at the organizational level in figure and item number sequence.

e. Tool and Support Equipment—Section V. A list of tools and support equipment authorized for the performance of maintenance at the organizational level.

f. Repair Parts—Section VI. A list of repair parts authorized for the performance of maintenance at the direct support, general support, and depot level in figure and item number sequence.

g. Special Tools, Test and Support Equipment. Not applicable.

h. Federal Stock Number and Reference Number Index—Section VII. A list of Federal stock numbers in ascending numerical sequence, followed by a list of reference numbers appearing in all the listings, in ascending alphanumeric sequence, cross-referenced to the illustration figure number and item number.

3. Explanation of Columns

The following provides an explanation of columns in tabular lists in Section II through VI.

a. Source, Maintenance, and Recoverability Codes (SMR).

(1) *Source code.* Indicates the selection status and source for the listed item. Source codes used are:

Code	Explanation
P	Applied to repair parts which are stocked in or supplied from GSA/DSA, or Army supply system and authorized for use at indicated maintenance categories.
M	Applied to repair parts which are not procured or stocked but are to be manufactured at indicated maintenance categories.
A	Applied to assemblies which are not procured or stocked as such but are made up of two or more units, each of which carry individual stock numbers and descriptions and are procured and stocked and can be assembled by units at indicated maintenance categories.
X	Applied to parts and assemblies which are not procured or stocked; the mortality of which normally is below that of the applicable end item; and the failure of which should result in retirement of the end item from the supply system.
X1	Applied to repair parts which are not procured or stocked, the requirement for which will be supplied by use of next higher assembly or component.
X2	Applied to repair parts which are not stocked. The indicated maintenance category requiring such repair parts will attempt to obtain through cannibalization; if not obtainable through cannibalization, such repair parts will be requisitioned with supporting justification through normal supply channels.
G	Applied to major assemblies that are procured with PEMA funds for initial issue only to be used as exchange assemblies at DSU and GSU level. These assemblies will not be stocked above DSU and GSU level or returned to depot supply level.

(2) *Maintenance code.* Indicates the lowest category of maintenance authorized to install the listed item. Maintenance level codes are:

<i>Code</i>	<i>Explanation</i>
C	Operator/Crew maintenance
O	Organizational maintenance
F	Direct support maintenance
H	General support maintenance
D	Depot maintenance

(3) *Recoverability code.* Indicates whether unserviceable items should be returned for recovery or salvage. Items not coded are expendable. Recoverability codes are:

<i>Code</i>	<i>Explanation</i>
R	Applied to repair parts (assemblies and components) which are considered economically repairable at direct and general support maintenance levels. When the maintenance capability to repair these items does not exist, they are normally disposed of at the GS level. When supply consideration dictate, some of these repair parts may be listed for automatic return to supply for depot level repair as set forth in AR 710-50. When so listed, they will be replaced by supply on an exchange basis.
T	Applied to high dollar value recoverable repair parts which are subject to special handling and are issued on an exchange basis. Such repair parts normally are repaired or overhauled at depot maintenance activities.
U	Applied to repair parts specifically selected for salvage by reclamation units because of precious metal content, critical materials, or high dollar value reusable casings or castings.

Note. When no code is indicated in the recoverability column, the part will be considered expendable.

b. Federal Stock Number. Indicates the Federal stock number assigned to the item and will be used for requisitioning purposes.

c. Description. Indicates the Federal item name and any additional description required. A part number or other reference number is followed by the applicable five-digit Federal supply code for manufacturers in parentheses.

d. Unit of Measure (U/M). A two character alphabetic abbreviation indicating the amount or quantity of the item upon which the allowances are based, e.g., EA, PR, etc.

e. Quantity Incorporated in Unit. Indicates the quantity of the item used in the assembly group.

f. Quantity Furnished with Equipment. Indicates the quantity of an item furnished with the equipment (BIIL only).

g. 15-Day Organizational Maintenance Allowance.

(1) The allowance columns are divided into four subcolumns. Indicated in each subcolumn opposite the first appearance of each item is the total quantity of items authorized for the number of equipments supported. Subsequent appearances of the same item will have the letters "REF" in the allowance columns. Items authorized for use as required but not for initial stockage are identified with an asterisk in the allowance column.

(2) The quantitative allowances for organizational level of maintenance represents one initial prescribed load for a 15-day period for the number of equipments supported. Units and organizations authorized additional prescribed loads will multiply the number of prescribed loads authorized by the quantity of repair parts reflected in the appropriate density column to obtain the total quantity of repair parts authorized.

(3) Organizational units providing maintenance for more than 100 of these equipments shall determine the total quantity of parts required by converting the equipment quantity to a decimal factor by placing a decimal point before the next to the last digit of the number to indicate hundredths, and multiplying the decimal factor by the parts quantity authorized in the 51-100 allowance column. Example, authorized allowance for 51-100 equipments is 12; for 140 equipments multiply 12 by 1.40 or 16.80 rounded off to 17 parts required.

(4) Subsequent changes to allowances will be limited as follows: No change in the range of items is authorized. If additional items are considered necessary, recommendation should be forwarded to Commanding General, U.S. Army Weapons Command, Rock Island, Illinois 61201, for exception or revision to the allowance list. Revisions to the range of items authorized will be based upon engineering ex-

perience, demand data, or The Army Equipment Record System (TAERS) information.

h. 90-Day DS/GS Maintenance Allowances.

Note. Allowances in GS Column are for GS maintenance only.

(1) The allowance columns are divided into three subcolumns. Indicated in each subcolumn, opposite the first appearance of each item, is the total quantity of items authorized for the number of equipments supported. Subsequent appearances of the same item will have the letters "REF" in the applicable allowance columns. Items authorized for use as required but not for initial stockage are identified with an asterisk in the allowance column.

(2) The quantitative allowances for DS/GS levels of maintenance will represent initial stockage for a 30 day period for the number of equipments supported.

(3) Determination of the total quantity of parts required for maintenance of more than 100 of these equipments can be accomplished by converting the equipment quantity to a decimal factor by placing a decimal point before the next to last digit of the number to indicate hundredths, and multiplying the decimal factor by the parts quantity authorized allowance for 51-100 allowance column. Example, authorized allowance for 51-100 is 40; for 150 equipments multiply 40 by 1.50 or 60 parts required.

i. 1-Year Allowance Per 100 Equipments/Contingency Planning Purposes. This column indicates opposite the first appearance of each item the total quantity required for distribution and contingency planning purposes. The range of items indicate the total quantities of all authorized items required to provide for adequate support of 100 equipments for one year.

j. Depot Maintenance Allowance per 100 Equipments. This column indicates opposite the first appearance of each item, the total quantity authorized for depot maintenance of 100 equipments. Subsequent appearances of the same item will have the letters "REF" in the allowance column. Items authorized for use as required but not for initial stockage are identified with an asterisk in the allowance column.

k. Illustration.

(1) *Figure number.* Indicates the figure number of the illustration in which the item is shown.

(2) *Item number.* Indicates the call-out number used to reference the item in the illustration.

4. Special Information

Not applicable.

5. How to Locate Repair Parts

a. When Federal stock number or reference number is unknown:

(1) *First.* Using the table of contents, determine the assembly group i.e. drilling machine, motor, within which the repair part belongs. This is necessary since illustrations are prepared for assembly groups and listings are divided into the same groups.

(2) *Second.* Find the illustration covering the assembly group to which the repair part belongs.

(3) *Third.* Identify the repair part on the illustration and note the illustration figure and item number of the repair part.

(4) *Fourth.* Using the Repair Parts Listing, find the assembly group to which the repair part belongs and locate the illustration figure and item number noted on the illustration.

b. When Federal stock number or reference number is known:

(1) *First.* Using the Index of Federal Stock Numbers and Reference Numbers, find the pertinent Federal stock number or reference number. This index is in ascending FSN sequence followed by a list of reference numbers in ascending alpha-numeric sequence, cross referenced to the illustration figure number and item number.

(2) *Second.* Using the Repair Part Listing, find the assembly group of the repair part and the illustration figure number and item number referenced in the Index of Federal Stock Numbers and Reference Numbers.

6. Abbreviations

<i>Abbreviations</i>	<i>Explanation</i>
brg -----	bearing
cap -----	capacity
cd-pltd -----	cadmium plated

Abbreviations	Explanation
circ -----	circumference
corr-res-S -----	corrosion resistant steel
cond -----	conductor
elec -----	electric (al)
fl -----	flat
gnd -----	ground
hd -----	head
hdl -----	handle
incl -----	include(s) (ed) (sive) (ing)
lt-duty -----	light duty
pt -----	point(s)
rad -----	radial, radius
rd -----	round
ru -----	rubber
S -----	steel
sgle -----	single
stght -----	straight
sr -----	single row
sw -----	switch
tapd -----	tapered
TPI -----	threads per inch
u/w -----	used with
UNC -----	Unified coarse thread
vert. -----	vertical
w/ -----	with
w/o -----	without

7. Federal Supply Codes for Manufacturer's

Federal Supply Codes	Manufacturer's Services and Standards
02660	Amphenol Corp
12356	The Cincinnati Milling Machine Co.
24446	General Electric Co.
28626	High Speed Hammer Co., Inc.
31549	F. L. Jacobs Co.
33743	Howell Electric Motors Corp.
43991	Norma-Hoffman Bearings Corp.
81348	Federal Specifications Promulgated by General Services Administration

8. Recommendations for Maintenance Publication Improvements

Report of errors, omissions, and recommendations for improving this publication by the individual user is encouraged. Reports should be resubmitted on DA Form 2028 (Recommended Changes to DA Publications) and forwarded direct to: Commanding General, Headquarters, U.S. Army Weapons Command, ATTN: AMSWE-SMM-P. Rock Island, Ill. 61201.

Section II. BASIC ISSUE ITEMS LIST

(1) Source, Maint. and Recov. Code			(2) Federal Stock No.	(3) Description Reference Number and Mfgs. Code	(4) Unit of Issue	(5) Qty. Inc. in Unit	(6) Qty. Furn. with Equip.	(7) Illustration	
(a) Source	(b) Maint.	(c) Recov.						(a) ig. No	(b) tem No.
-P-	C-	--	3030-356-8497	DRILLING MACHINE, UPRIGHT, BENCH MOUNTED, 1/4 IN. CAPACITY, 2-1/4 IN. SPINDLE TRAVEL, 1/4 HP, 115 V, 60 C, SGLE-PH (HIGH SPEED HAMMER CO, MODEL R-53) COMPLETE WITH ONE DRILL CHUCK AND ONE DRILL CHUCK KEY REPAIR PARTS BELT, ROUND RUBBER 1/4 DIA, 33 INSIDE CIRCLE DIA 135 (28626)	EA	1	1	2	1

SECTION III. PRESCRIBED LOAD ALLOWANCE

(1) FEDERAL STOCK NO.	(2) DESCRIPTION REFERENCE NO. AND MFRS. CODE	(3) 15-DAY ORGANIZATIONAL MAINT. ALLOWANCE			
		(A)	(B)	(C)	(D)
		1-5	6-20	21-50	51-100
THE FOLLOWING ITEMS W/ALLOWANCES ARE APPLICABLE TO ORGANIZATIONAL MAINTENANCE OF THE DRILLING MACHINE LISTED IN THIS MANUAL					
3030-356-8497	BELT, ROUND RUBBER 1/4 DIA, 33 INSIDE CIRCLE DIA 135 (28626)	*	2	2	4
3460-187-2199	CHUCK, DRILL 3-JAW KEY TYPE, PLAIN BRG, W/O ARBOR, NO. 1 JACOBS TAPER HOLE, 0 TO 1/4 CAP., LT-DUTY 105 (28626)	*	*	2	4
3460-264-5580	KEY, DRILL CHUCK JACOB'S DESIGN, KEY NO. 3, S 1 (31549)	*	*	2	4

SECTION IV. REPAIR PARTS LIST

(1) SOURCE MAINT. AND RECOV. CODE (A) (B) (C) SOURCE MAINT. RECOV.			(2) FEDERAL STOCK NO.	(3) DESCRIPTION REFERENCE NO. AND MFR. CODE	(4) UNIT OF ISSUE	(5) QTY. INC. IN UNIT	(6) 15 DAY ORGANIZATIONAL MAINT. ALLOWANCE (A) (B) (C) (D) 1-5 6-20 21-50 51-100				(7) ILLUSTRATION (A) (B) FIGURE ITEM NO. NO.	
---	--	--	--------------------------------	---	----------------------------	-----------------------------------	--	--	--	--	--	--

REPAIR PARTS

P	C		3030-356-8497	BELT, ROUND RUBBER 1/4 DIA, 33 INSIDE CIRCLE DIA 135 (28626)	EA	1	*	2	4	10	2	1
---	---	--	---------------	---	----	---	---	---	---	----	---	---

SECTION V. TOOLS AND SUPPORT EQUIPMENT

(1) SOURCE MAINT. AND RECOV. CODE (A) (B) (C) SOURCE MAINT. RECOV.			(2) FEDERAL STOCK NO.	(3) DESCRIPTION REFERENCE NO. AND MFR. CODE	(4) UNIT OF ISSUE	(5) QTY. INC. IN UNIT	(6) 18 DAY ORGANIZATIONAL MAINT. ALLOWANCE (A) (B) (C) (D) 1-5 6-20 21-50 51-100				(7) ILLUSTRATION (A) (B) FIGURE ITEM NO. NO.	
---	--	--	--------------------------------	---	----------------------------	-----------------------------------	--	--	--	--	--	--

TOOLS AND SUPPORT EQUIPMENT

P	O		3460-187-2199	CHUCK, DRILL 3 JAW KEY TYPE, PLAIN BRG, W/O ARBOR, NO. 1 JACOBS TAPER HOLE, 0 TO 1/4 CAP., LT-DUTY 105 (28626)	EA	1	*	*	2	4		
P	O		3460-264-5580	KEY, DRILL CHUCK JACOBS DESIGN, KEY NO. 3, S 1 (31549)	EA	1	*	*	2	4		

SECTION VI. REPAIR PARTS, DIRECT SUPPORT, GENERAL SUPPORT AND
DEPOT MAINTENANCE REPAIR PARTS LIST

(1) SOURCE			(2)	(3)	(4)	(5)	(6)			(7)	(8)	(9)	(10)			
MAINT AND RECOV CODE			FEDERAL STOCK	DESCRIPTION	UNIT OF MEAS	QTY IN	30-DAY DS MAINT ALLOWANCE			30-DAY GS MAINT ALLOWANCE			1-YR ALW PER 100 EQUIP	DEPOT MAINT PER 100 EQUIP	ILLUSTRATION (A) (B)	
(A)	(B)	(C)	NO.	REFERENCE NUMBER & MFR. CODE	USABLE ON	CODE	(A)	(B)	(C)	(A)	(B)	(C)	CNTGCTY	EQUIP	FIG NO.	ITEM NO.
P	F		5305-959-2723	SCREW, MACHINE FL, CSK HD, CROSS RECESS DRIVE, 3/8-16UNC X 1 LG, CHROMATED		EA	1	*	*	*	*	*	*	*	1	1
P	F		3413-420-9092	COVER PLATE, PINION 97A (28626)		EA	1	*	*	*	*	*	*	*	1	2
P	D		3413-420-9100	PINION, FEED ASSEMBLY W/HDL 97 (28626)		EA	1						*	*	1	3
P	F		5310-484-1804	NUT, SELF LOCKING SPDL LOCK, 5/16-32UNEF 100 (28626)		EA	1	*	*	*	*	*	20	*	1	4
P	D		3110-156-1850	BEARING, BALL, THRUST GND, SGLE DIRECTION, GROOVED RACE SURFACE, RIGID, SR, RE- TAINER TYPE, 0.4724 BORE, 0.9055 OD, 0.354 H DL12 (43991)		EA	3						18	*	1	5
P	D		3413-357-4050	SHAFT, SHOULDERED S, ONE END TAPD 5 DEG, OTHER END THD 5/16-32, 0.437 LARGEST SHAFT DIA 11.688 LG O/A 0.313 DIA X 0.563 LG FIRST SHOULDER STEP, 0.373 DIA X 1.750 LG SECOND SHOULDER STEP, TWO SPLINES 95 (28626)		EA	1						2	2	1	6
P	D		3110-156-1850	BEARING, BALL, THRUST GND SGLE DIRECTION, GROOVED RACE SURFACE, RIGID, SR, RE- TAINER TYPE 0.4724 BORE, 0.9055 OD, 0.354 H DL12 (43991)		EA	1						REF	REF	1	7
P	D		3413-420-9101	BUSHING, SPINDLE 96 (28626)		EA	1						*	*	1	8

SECTION VI. REPAIR PARTS LIST-CONTINUED

(1)	(2)	(3)	(4)	(5)	(6)			(7)			(8)	(9)	(10)	
SOURCE	FEDERAL	DESCRIPTION	UNIT	QTY	30-DAY DS MAINT			30-DAY GS MAINT			1-YR	DEPOT	ILLUSTRATION	
MAINT AND RECOV CODE	STOCK		OF	INC	ALLOWANCE			ALLOWANCE			ALW PER	MAINT	(A)	(B)
(A) (B) (C)	NO.	REFERENCE NUMBER & MFR. CODE	MEAS	IN	(A)	(B)	(C)	(A)	(B)	(C)	EQUIP	PER 100	FIG	ITEM
SOURCE MAINT RECOV		USABLE ON CODE		UNIT	1-20	21-50	51-100	1-20	21-50	51-100	CNTG	EQUIP	NO.	NO.
P F	5310-524-0580	NUT, PLAIN, ROUND DEPTH GAGE, ADJUSTING, KNURLED 91 (28626)	EA	4	*	*	*	*	*	*	16	*	1	9
X2 D	3413-420-9099	HEAD, FEED ARM 71 (28626)	EA	1									1	10
P D	3413-420-9098	COLUMN, FEED ARM 71A (28626)	EA	1							*	*	1	11
P F	3413-420-9097	ROD, THREADED DEPTH GA 87 (28626)	EA	1	*	*	*	*	*	*	*	*	1	12
P F	5305-357-3543	SCREW, IDLER PULLEY SHOULDER BRG 114 (28626)	EA	1	*	*	*	*	*	*	10	*	1	13
P F	3413-420-9096	PULLEY, IDLER 00 (28626)	EA	1	*	*	*	*	*	*	*	*	1	14
P F	5305-357-3546	SCREW, TAPERED, IDLER LINK 112 (28626)	EA	1	*	*	*	*	*	*	10	*	1	15
P F	3413-420-9095	LINK, IDLER PULLEY 74 (28626)	EA	1	*	*	*	*	*	*	*	*	1	16
P F	3413-420-9088	THUMB NUT, IDLER LINK 113 (28626)	EA	1	*	*	*	*	*	*	*	*	1	17
P F	5315-484-1666	PIN, STRAIGHT HEADLESS 115 (28626)	EA	1	*	*	*	*	*	*	15	*	1	18
P F	5305-292-8876	SCREW, MACHINE RD HD, SLOT-DRIVE, S, CAD-PLTD, 1/4-20TPI UNC X 1/2 LG	EA	3	*	*	*	*	*	*	*	*	1	19
P D	3413-420-9087	COVER PLATE, UPPER 120B (28626)	EA	1							*	*	1	20
P D	5310-494-2636	NUT, PLAIN, HEXAGON SPDL BRG 124 (28626)	EA	1							*	20	1	21
P D	3110-144-8505	BEARING, BALL, ANNULAR GND, RAD, SR, NON-LOADING GROOVE, BOTH RINGS FLUSH,	EA	1							*	*	1	22

		0.6693 BORE, 1.5748 OD, 0.472 W									
		O/A									
		AL49617-5 (12356)									
P	D	3413-420-9089	QUILL, SPINDLE 80 (28626)	EA	1			*	*	1	23
P	D	3413-420-9090	COVER PLATE, LOWER 120A (28626)	EA	1			*	*	1	24
P	D	5310-494-2636	NUT, SELF LOCKING SPDL BRG 124 (28626)	EA	1			REF	REF	1	25
P	D	3110-144-8505	BEARING, BALL, ANNULAR GND, RAD, SR, NON-LOADING GROOVE BOTH RINGS FLUSH, 0.6693 BORE, 1.5748 OD, 0.472 W O/A	EA				REF	REF	1	26
P	D	3413-420-9093	AL 49617-5 (12356) PULLEY 4 STEP SPDL 79 (28626)	EA	1			*	*	1	27
X1	D	3413-420-9094	HEAD, DRILL 73 (28626)	EA	1					1	28
P	F	5310-486-2449	NUT, PLAIN, HEXAGON DEPTH GAGE, LOCKING 90 (28626)	EA	1	*	*	*	*	30	29
P	D	5340-485-0923	SPRING, HELICAL, COMPRESSION FEED ARM 108 (28626)	EA	1			5	*	1	30
X1	D	3413-420-9117	BASE, DRILLING MACHINE 77 (28626)	EA	1						
P	O	3460-187-2199	CHUCK, DRILL 3 JAW KEY TYPE, PLAIN BRG, W/O ARBOR, NO. 1 JACOBS TAPER HOLE 0 TO 1/4 CAP., LT-DUTY 105 (28626)	EA	1	*	*	*	*	*	*
X2	D	3413-420-9108	COLUMN, TUBE 73A1 (28626)	EA	1						
P	F	3413-420-9091	COVER, GUARD BELT 72 (28626)	EA	1	*	*	*	*	*	*
X2	D	3413-420-9107	FLANGE, COLUMN 73A2 (28626)	EA	1						
P	O	3460-264-5580	KEY, DRILL CHUCK JACOBS DESIGN, KEY NO. 3, S 1 (31549)	EA	1	*	*	*	*	*	*
P	F	3413-420-9110	NUT, PLAIN, KNURLED SP GUARD THUMBNUT 122 (28626)	EA	1	*	*	*	*	*	*

SECTION VI. REPAIR PARTS LIST-CONTINUED

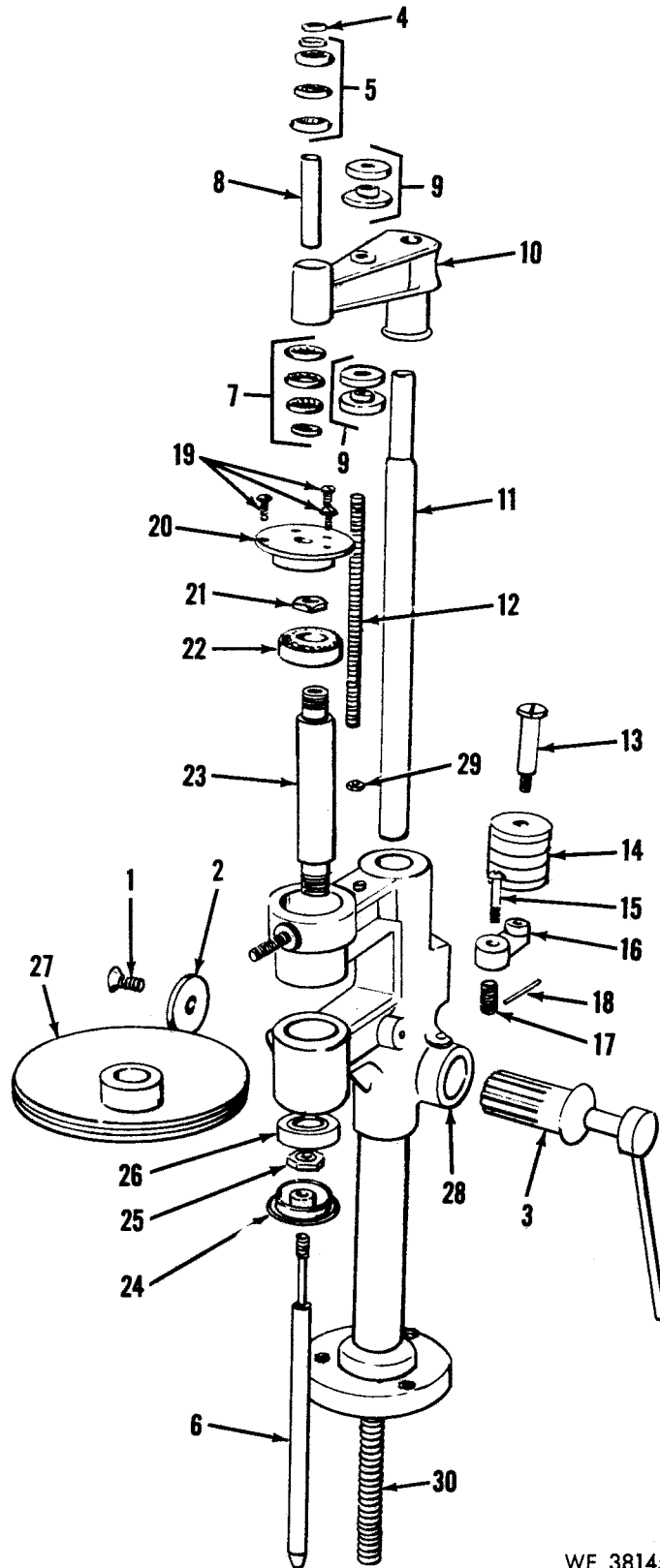
(1)			(2)	(3)			(4)	(5)	(6)			(7)			(8)	(9)	(10)		
SOURCE			FEDERAL	DESCRIPTION			UNIT	QTY	30-DAY DS MAINT			30-DAY GS MAINT			1-YR	DEPOT	ILLUSTRATION		
MAINT AND			STOCK				OF	INC	ALLOWANCE			ALLOWANCE			100	ALW	MAINT	(A)	(B)
RECOV CODE			NO.	REFERENCE NUMBER & MFR. CODE			MEAS	IN	(A)	(B)	(C)	(A)	(B)	(C)	EQUIP	PER 100	FIG	(A)	(B)
(A)	(B)	(C)	NO.	USABLE ON CODE				UNIT	1-20	21-50	51-100	1-20	21-50	51-100	CNTG	EQUIP	PER 100	NO.	ITEM
SOURCE	MAINT	RECOV																	
P	D		5305-269-3211	SCREW, CAP, HEXAGON HEAD S, CAD-PLTD, 3/8-16UNC X 1 LG			EA	3	*	*	*	*	*	*	*	*			
X1	D		3413-420-9109	TABLE, DRILLING MACHINE 70A (28626)			EA	1											
REPAIR PARTS FOR MOTOR GROUP																			
P	C		3030-356-8497	BELT, ROUND RUBBER 1/4 DIA, 33 INSIDE CIRCLE DIA 135 (28626)			EA	1	2	*	*	*	*	*	2	4	2	1	
P	F		3413-420-9106	PLUG, REAR PULLEY 149 (28626)			EA	1	*	*	*	*	*	*	*	*		2	2
P	F		5305-715-1213	SETSCREW HEADLESS, SLOT-DRIVE, OVAL PT, S, CAD-PLTD, 1/4-20UNC X 3/8 LG			EA	2	*	*	*	*	*	*	*	*		2	3
P	F		3413-420-9105	PULLEY 4 STEP 78 (28626)			EA	1	*	*	*	*	*	*	*	*		2	4
P	F		5305-464-7206	SCREW, CAP, HEXAGON HEAD			EA	3	*	*	*	*	*	*	*	*		2	5
P	F		5310-484-1803	NUT, CAP ACORN SP (28676)			EA	2	*	*	*	*	*	*	40	*		2	6
P	F		3413-420-9103	BRACE, MOTOR 69 (28626)			EA	1	*	*	*	*	*	*	*	*		2	7
P	F		5305-715-1213	SETSCREW HEADLESS, SLOT DRIVE OVAL PT, S, CAD-PLTD, 1/4-20UNC X 3/8 LG			EA	5	REF	REF	REF	REF	REF	REF	REF	REF		2	8
P	F	R	6105-134-5546	MOTOR, ELECTRIC CAPACITOR START, AC, BALL BRG, RIGID MOUNT SGLE-PH, 115 V, 60 C, 1/4 HP, 1725 RPM 11152 (33743)			EA	1	*	*	*	*	*	*	5	*		2	9
P	F		5305-043-1942	SCREW, CAP, HEXAGON HEAD S, CAD OR ZINC-PLTD, 10-32 TPI NF, FULL THD			EA	2	*	*	*	*	*	*	*	*		2	10

P	F	5930-356-8200	SWITCH, STARTING, MOTOR TOGGLE, OPEN TYPE, DBL-BREAK CONTACTS, 110/220 V, AC, 1 HP, SGLE POLE, W/THERMAL OVERLOAD RELAY HEATER ELEMENT CR1061-C (24446)	EA	1	*	*	*	*	*	*	*	*	2	11
P	F	5930-365-9446	BOX, SWITCH, ELECTRICAL 2744705P1 (24446)	EA	1	*	*	*	*	*	*	*	*	2	12
P	F	6145-089-5627	CORD, ELECTRICAL 0 TO 600 V, 3 COND, STRANDED, AWG 16, COTTON WRAP, SYN-RU JACKET TYPE SJ JC580 (81348)	EA	1	*	*	*	*	*	15	*	*	2	13
P	F	5935-644-6900	CONNECTOR, PLUG, ELECTRICAL 1 CONNECTOR MATING END, STGHT, NON-LKG, CORR-RES FERROUS MTL SHELL, 2 MALE FL PARALLEL CONTACTS, 10 AMP-250 V AND 15 AMP-125 V, AC/DC, PLASTIC CABLE ACCOMMODATION 61F4 (02660)	EA	1	*	*	*	*	*	15	*	*	2	14
P	D	5305-360-7731	SETSCREW FILISTER HD, SLOT-DRIVE, HALF-DOG PT, 10-32NF X 23/64 LG, BR, ZINC-PLTD	EA	6							*	*	2	15
P	D	5910-356-7710	CAPACITOR, MOTOR DRIVE 110 V, 60 C, AC 8753704G4 (24446)	EA	1						20	*	*	2	16
P	D	5305-464-7208	SCREW, CAP, HEXAGON HEAD MOTOR MOUNT 134 (28626)	EA	3							*	*	2	17
X1	D	3413-420-9102	MOUNT, MOTOR 68 (28626)	EA	1									2	18

SECTION VII. INDEX-FEDERAL STOCK NUMBER AND REFERENCE NUMBER
 CROSS-REFERENCE TO FIGURE AND ITEM NUMBER

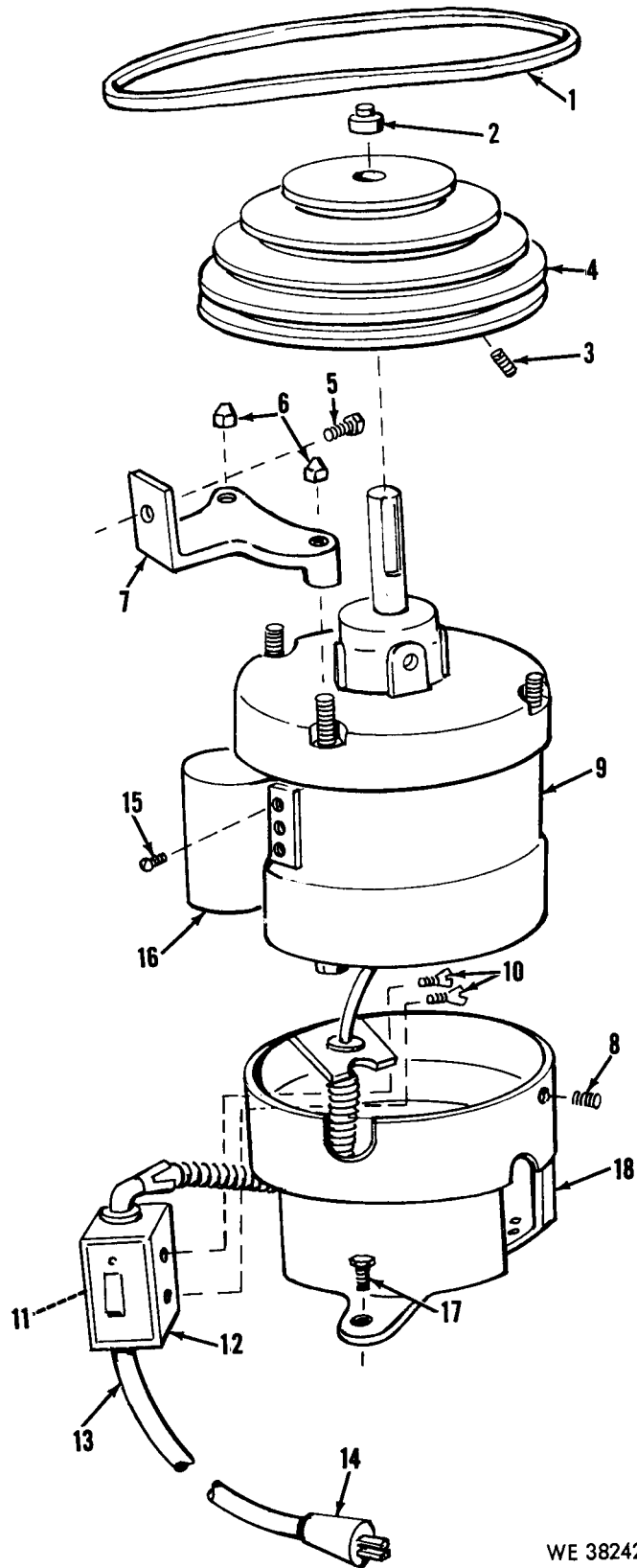
STOCK NUMBER	FIGURE NO.	ITEM NO.	STOCK NUMBER	FIGURE NO.	ITEM NO.
3030-356-8497	2	1	3413-420-9117		
3110-144-8505	1	22	3460-187-2199		
	1	26	3460-264-5580		
3110-156-1850	1	5	5305-043-1942	2	10
	1	7	5305-269-3211		
3413-357-4050	1	6	5305-292-8876	1	19
3413-420-9087	1	20	5305-357-3543	1	13
3413-420-9088	1	17	5305-357-3546	1	15
3413-420-9089	1	23	5305-360-7731	2	15
3413-420-9090	1	24	5305-464-7206	2	5
3413-420-9091			5305-464-7208	2	17
3413-420-9092	1	2	5305-715-1213	2	3
3413-420-9093	1	27		2	8
3413-420-9094	1	28	5305-959-2723	1	1
3413-420-9095	1	16	5310-484-1803	2	6
3413-420-9096	1	14	5310-484-1804	1	4
3413-420-9097	1	12	5310-486-2449	1	29
3413-420-9098	1	11	5310-494-2636	1	21
3413-420-9099	1	10		1	25
3413-420-9100	1	3	5310-524-0580	1	9
3413-420-9101	1	8	5315-484-1666	1	18
3413-420-9102	2	18			
3413-420-9103	2	7	5340-485-0923	1	30
3413-420-9105	2	4	5910-356-7710	2	16
3413-420-9106	2	2	5930-356-8200	2	11
3413-420-9107			5930-365-9446	2	12
3413-420-9108			5935-644-6900	2	14
3413-420-9109			6105-134-5546	2	9
3413-420-9110			6145-089-5627	2	13

REFERENCE NO.	MFG CODE	FIG NO.	ITEM NO.	REFERENCE NO.	MFG CODE	FIG NO.	ITEM NO.
AL49617-5	12356	1	22	61F4	02660	2	14
CR1061-C	24446	2	11	68	28626	2	18
DL12	43991	1	5	69	28626	2	7
		1	7	70A	28626		
JC580	81348	2	13	71	28626	1	10
SP	28626	2	6	71A	28626	1	11
1	31549			72	28626		
100	28626	1	4	73	28626	1	28
105	28626			73A1	28626		
108	28626	1	30	73A2	82626		
11152	33743	2	9	74	28626	1	16
112	28626	1	15	77	28626		
113	28626	1	17	78	28626	2	4
114	28626	1	13	79	28626	1	27
115	28626	1	18	80	28626	1	23
120A	28626	1	24	87	28626	1	12
120B	28626	1	20	8753704G4	24446	2	16
122	28626			90	28626	1	29
124	28626	1	21	91	28626	1	9
		1	25	95	28626	1	6
134	28626	2	17	96	28626	1	8
135	28626	2	1	97	28626	1	3
149	28626	2	2	97A	28626	1	2
2744705P1	24446	2	12	99	28626	1	14



WE 38145

Figure 1. Drilling machine.



WE 38242

Figure 2. Drilling machine (motor group).

By Order of the Secretary of the Army:

W. C. WESTMORELAND,
General, United States Army,
Chief of Staff.

Official:

KENNETH G. WICKHAM,
Major General, United States Army,
The Adjutant General.

DISTRIBUTION:

Active Army:

DCSLOG (1)	Gen Dep (2)
CNGB (1)	Engr FLDMS (1)
CofSptS (1)	USABRL (1)
Dir of Trans (1)	Army Dep (5)
ACSC-E (1)	USAOC&S (10)
CofEngrs (6)	Ft Knox FLDMS (10)
TSG (1)	Arsenals (5)
USCONARC (3)	PG (2)
USAMC (2)	MAAG (2)
USAMEC (2)	Sig FLDMS (1)
USAWECOM (75)	USASCS (5)
USAASCOM (10)	WSMR (2)
USACDCEC (10)	USATAC (2)
ARADCOM (2)	USATC (2)
ARADCOM Rgn (2)	AFIP (1)
OS Maj Comd (10)	Camp Stanley Storage Actv (1)
LOGCOMD (3)	USATSCH (5)
Armies (6)	NLABS (2)
Corps (2)	USARADB (2)
Div (3)	Units org under fol TOE:
Bde (1)	9-17 (2)
Regt/Gp/Bat Gp (2)	9-47 (2)
Bn (1)	

NG: State AG (3); Units same as active Army except allowance is one copy each unit.

USAR: None.

For explanation of abbreviations used, see AR 320-50.

**TM 9-3413-223-15P— OPERATOR'S ORGANIZATIONAL, DIRECT SUPPORT, GENERAL SUPPORT AND DEPOT
MAINTENANCE REPAIR PARTS AND SPECIAL TOOLS LIST FOR DRILLING MACHINE,
UPRIGHT, BENCH MOUNTED, 1/4 IN. CAPACITY, 2-1/4 IN. SPINDLE TRAVEL,
1/4 HP, 115 V, 60 C, SGE-PH (HIGH SPEED HAMMER CO, MODEL R-53)—1969**